

**RoHS  
COMPLIANT**

**NOTES:**  
INTERFACE AND ENVIRONMENTAL REQUIREMENTS  
CONFORM TO MIL-STD-348, SMP SERIES

**ELECTRICAL SPECIFICATIONS:**

FREQUENCY RANGE (GHz): DC TO 26.5 GHz  
NOMINAL IMPEDANCE: 50 OHMS  
RETURN LOSS:

- $\geq 30$  dB, DC - 4 GHz
- $\geq 23$  dB, 4 - 12 GHz
- $\geq 20$  dB, 12 - 18 GHz

**INSERTION LOSS:**

- $\leq 0.1 \times \sqrt{f(\text{GHz})}$  dB, DC - 18 GHz
- INSULATION RESISTANCE:  $\geq 5 \text{ G}\Omega$
- CENTER CONTACT RESISTANCE:  $\leq 6.0 \text{ m}\Omega$
- OUTER CONTACT RESISTANCE:  $\leq 2.0 \text{ m}\Omega$
- TEST VOLTAGE: 500 V rms
- WORKING VOLTAGE: 335 V rms
- CONTACT CURRENT: 1.2A DC MAX.

**MECHANICAL & ENVIRONMENTAL SPECIFICATIONS:**

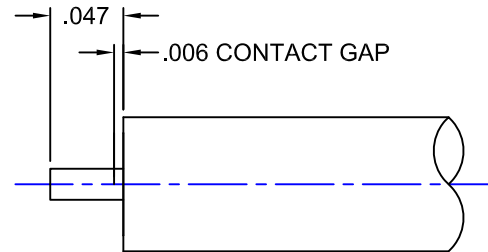
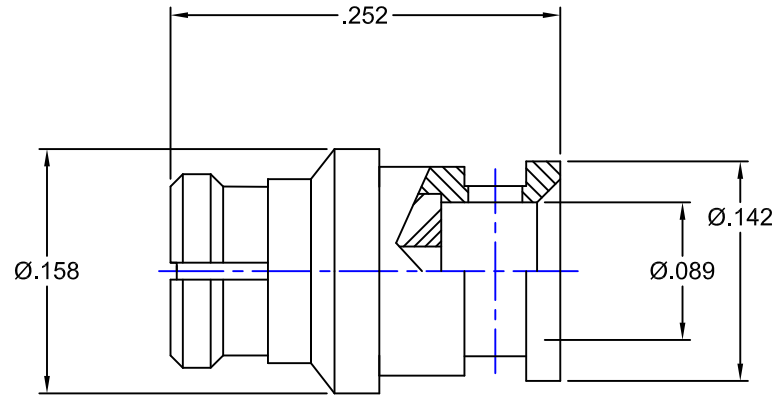
MATING CYCLES:  $\geq 100$   
TEMPERATURE RATING (DEGREES CELCIUS):  $-65^\circ\text{C}$  TO  $+155^\circ\text{C}$   
ENGAGEMENT FORCE: 10.0 lb. MAX.  
DISENGAGEMENT FORCE: 2 lb. MIN.  
THERMAL SHOCK: MIL-STD-202, METHOD 107, COND. B  
VIBRATION: MIL-STD-202, METHOD 204, COND. B  
SHOCK: MIL-STD-202, METHOD 213, COND. A  
MOISTURE RESISTANCE: MIL-STD-202, METHOD 106  
RoHS: COMPLIANT

**MATERIALS:**

BODY: PHOSPHOR BRONZE PER ASTM-B-139  
INSULATOR: TEFLON PER ASTM-D-1710  
CONTACT: PHOSPHOR BRONZE PER ASTM-B-139  
SPRING RING: PHOSPHOR BRONZE PER ASTM-B-139

**FINISHES:**

BODY: GOLD PLATE PER MIL-G-45204  
CONTACT: GOLD PLATE PER MIL-G-45204

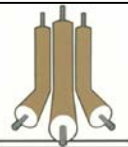


RECOMMENDED  
CABLE STRIPPING DIMS

**PROPRIETARY NOTICE**  
THIS DRAWING AND DESIGNS AND IDEAS EMBEDDED  
IN THE DEVICE TO WHICH IT RELATES AND THE  
METHOD OF PRODUCING THE DEVICE SHALL NOT BE  
EMPLOYED COPIED OR DISCLOSED TO ANYONE IN ANY  
MANNER WITHOUT THE WRITTEN CONSENT OF AN  
EZ FORM COMPANY OFFICIAL

|             |        |  |
|-------------|--------|--|
| APPD.       | EW     |  |
| DATE        | 3/5/14 |  |
| BY          | EW     |  |
| DATE        | 3/5/14 |  |
| DESCRIPTION |        |  |
| REV.        | -      |  |

|                                    |                       |              |        |
|------------------------------------|-----------------------|--------------|--------|
| <b>UNLESS OTHERWISE SPECIFIED:</b> |                       |              |        |
| DIMENSIONS ARE IN INCHES:          |                       | SCALE        |        |
| TOLERANCES:                        |                       | 8:1          |        |
| DECIMALS:                          | FRACTIONS: $\pm 1/64$ |              |        |
| 2-PLACE $\pm .03$                  | ANGLES: $\pm 3^\circ$ |              |        |
| 3-PLACE $\pm .01$                  |                       |              |        |
| MATERIAL: SEE NOTES                |                       |              |        |
| FINISH: SEE NOTES                  |                       |              |        |
| DRAWN                              | DATE                  | CHECKED      | DATE   |
| EW                                 | 3/5/14                | AT           | 3/5/14 |
| APPROVED                           | DATE                  | SHEET 1 OF 1 |        |
| JAB                                | 3/5/14                |              |        |



**EZ Form Cable  
Corporation**  
285 Welton Street  
Hamden, CT 06517

**SMP STRAIGHT JACK  
FOR  $\phi.086$  SEMI-RIGID CABLE**

|   |             |            |      |
|---|-------------|------------|------|
| A | CODE IDENT. | 701401-186 | REV. |
|   | 9W826       |            | -    |