

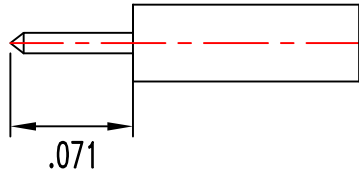
**RoHS**  
COMPLIANT

**ELECTRICAL:**  
NOMINAL IMPEDANCE: 50Ω  
OPERATING FREQUENCY: DC TO 12 GHz

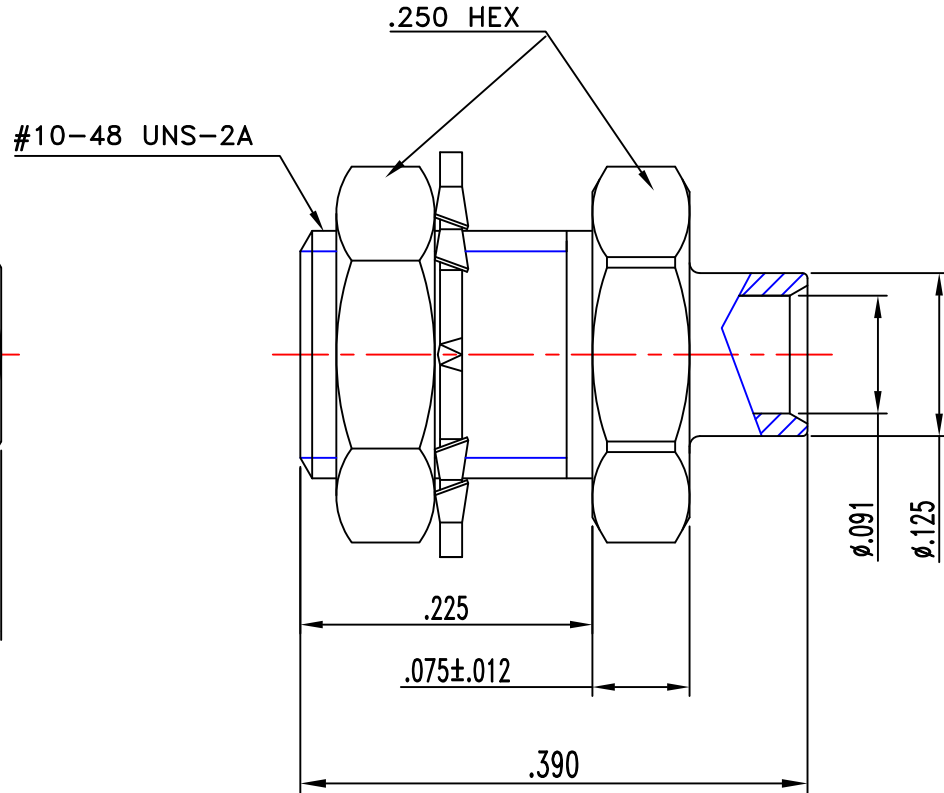
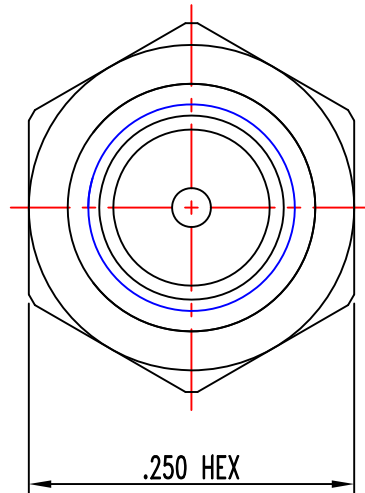
**MATERIALS:**  
BODY AND CONTACT: BERYLLIUM COPPER PER ASTM-B-196  
NUT AND WASHER: PHOSPHOR BRONZE PER ASTM-B-103  
INSULATOR: PTFE PER ASTM-D-1710

**FINISHES:**  
BODY: TRI-ALLOY  
CONTACT: GOLD PLATE PER MIL-G-45204  
NUT AND WASHER: TRI- ALLOY

**NOTES:**  
REMOVE ALL BURRS AND BREAK ALL SHARP EDGES



RECOMMENDED  
CABLE STRIPPING DIMS



**PROPRIETARY NOTICE**  
THIS DRAWING AND DESIGNS AND IDEAS EMBEDDED IN THE DEVICE TO WHICH IT RELATES AND THE INFORMATION CONTAINED HEREIN ARE THE PROPERTY OF EZ FORM CABLE CORPORATION AND SHALL NOT BE REPRODUCED, COPIED, OR DISCLOSED TO ANYONE IN ANY MANNER WITHOUT THE WRITTEN CONSENT OF AN EZ FORM COMPANY OFFICIAL

|             |                 |                                 |
|-------------|-----------------|---------------------------------|
| APPD.       | DK              | DK                              |
| DATE        | 9/19/14         | 9/24/14                         |
| BY          | DK              | DK                              |
| DATE        | 9/19/14         | 9/24/14                         |
| DESCRIPTION | INITIAL RELEASE | ADDED CABLE STRIPPING DIMENSION |
| REV.        | —               | A                               |

|                                    |                          |               |         |
|------------------------------------|--------------------------|---------------|---------|
| <b>UNLESS OTHERWISE SPECIFIED:</b> |                          |               |         |
| <b>DIMENSIONS ARE IN INCHES:</b>   |                          | SCALE<br>NONE |         |
| <b>TOLERANCES:</b>                 |                          |               |         |
| <b>DECIMALS:</b>                   | <b>FRACTIONS: ± 1/64</b> |               |         |
| <b>2-PLACE ± .010</b>              | <b>ANGLES: ± 3°</b>      |               |         |
| <b>3-PLACE ± .005</b>              |                          |               |         |
| MATERIAL:                          |                          |               |         |
| FINISH:                            |                          |               |         |
| DRAWN                              | DATE                     | CHECKED       | DATE    |
| DK                                 | 9/19/14                  | AT            | 9/19/14 |
| APPROVED                           | DATE                     | SHEET         | OF      |
| JAB                                | 9/19/14                  | 1             | 1       |

|  |                      |            |
|--|----------------------|------------|
| <b>EZ Form Cable Corporation</b><br>285 Welton Street<br>Hamden, CT 06517    |                      |            |
| TITLE<br><b>SMP BULKHEAD PLUG<br/>LIMITED DETENT TYPE FOR .086<br/>CABLE</b> |                      |            |
| <b>A</b>   | CODE IDENT.<br>9W826 | 701405-086 |
|  |                      | REV.<br>A  |