

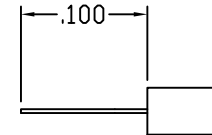
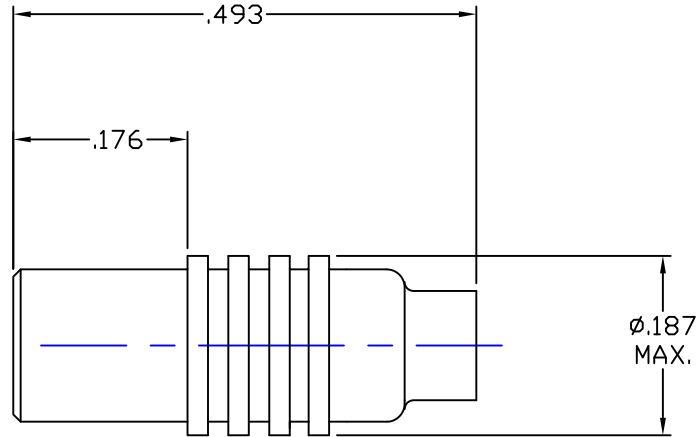
NOTES:
INTERFACE CONFORMS TO MCX CONNECTOR SERIES

MATERIALS:
BODIES BRASS PER ASTM-B-16
CONTACT BERYLLIUM COPPER PER ASTM-B-196
INSULATOR TEFLON PER ASTM-D-1710

701952-086MCX
701952-047MCX

107-F110
107-F111

FINISHES:
BODIES & CONTACT GOLD PLATE PER MIL-G-45204



RECOMMENDED STRIPPING DIMENSIONS

THIS DRAWING THE DESIGNS AND IDEAS EMBODIED IN THE DEVICE TO WHICH IT RELATES AND THE METHOD OF PRODUCING THE DEVICE SHALL NOT BE EMPLOYED COPIED OR DISCLOSED TO ANYONE IN ANY MANNER WITHOUT THE CONSENT OF ANEZ FORM COMPANY OFFICIAL

APPD		
BY		
DATE		
DESCRIPTION		
REV.		

UNLESS OTHERWISE SPECIFIED:			
DIMENSIONS ARE IN INCHES:			SCALE
TOLERANCES:			
DECIMALS:	FRACTIONS		± 1/64
2-PLACE ± .010	ANGLES		± 3°
3-PLACE ± .005			
MATERIAL:	_____		
FINISH:	_____		
DRAWN	DATE	CHECKED	DATE
P.J.P.	2-10-03	J.A.B.	2-10-03
APPROVED	DATE	SHEET	OF
T.A.R.	2-10-03		

EZ FORM CABLE CORPORATION HAMDEN, CT. 06517			
TITLE MCX STRAIGHT JACK FOR .047 SEMI RIGID			
A	CODE IDENT.	CD-701952-XXX	REV.
	9W826		