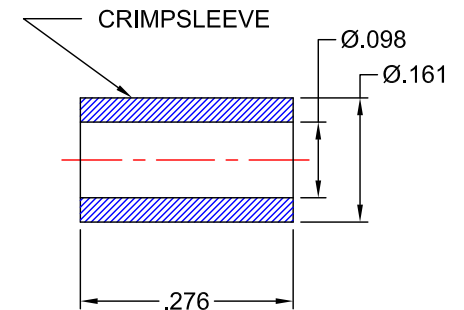
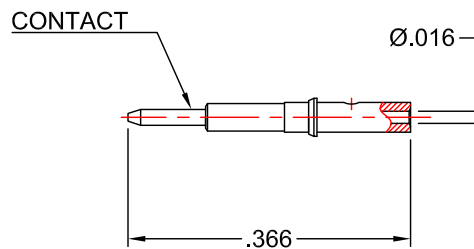
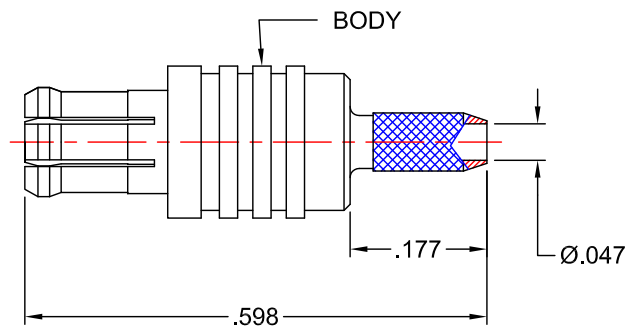


RoHS
COMPLIANT



NOTES:

INTERFACE CONFORMS TO IEC 60169-36
AND CECC 22220 MCX SERIES

ELECTRICAL:

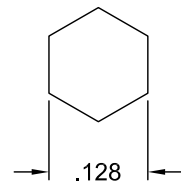
NOMINAL IMPEDANCE: 50 Ω
FREQUENCY RANGE: DC TO 6 GHz

MATERIALS:

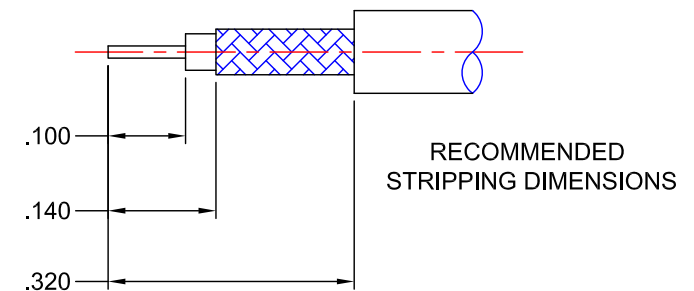
INSULATOR: TEFLON PER ASTM-D-1710
OUTER CONTACT: BERYLLIUM COPPER PER ASTM-B-196
BODY & CONTACT: 360 ALLOY BRASS 1/2 HARD PER ASTM-B-16
CRIMP SLEEVE: COPPER PER ASTM-B-142, ALLOY 122, ANNEALED

FINISHES:

CONTACT: GOLD PLATE PER MIL-DTL-45204
BODY & CRIMP SLEEVE: GOLD PLATE PER MIL-DTL-45204



RECOMMENDED
CRIMP SIZE



RECOMMENDED
STRIPPING DIMENSIONS

PROPRIETARY NOTICE
THIS DRAWING AND DESIGN AND IDEAS EMBEDDED IN THE DEVICE TO WHICH IT RELATES AND THE METHOD OF PRODUCING THE DEVICE SHALL NOT BE EMPLOYED COPIED OR DISCLOSED TO ANYONE IN ANY MANNER WITHOUT THE WRITTEN CONSENT OF AN EZ FORM COMPANY OFFICIAL

APPD.	T.D.	
DATE	4/6/17	
BY	J.N.	
DATE	4/6/17	
DESCRIPTION	INITIAL RELEASE	
REV.	-	

UNLESS OTHERWISE SPECIFIED:

DIMENSIONS ARE IN INCHES:
TOLERANCES: NONE

SCALE
4:1

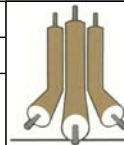


MATERIAL:
SEE NOTES

FINISH:
SEE NOTES

DRAWN	DATE	CHECKED	DATE
J.N.	4/6/17	T.D.	4/6/17

APPROVED	DATE	SHEET	1	OF	1
A.T.	4/6/17				



EZ Form Cable Corporation
285 Welton Street
Hamden, CT 06517
WWW.ezform.com

TITLE
MCX STRAIGHT PLUG FOR
RG-178/196 CABLE

A	CODE IDENT.	701958-178MCX	REV.
	9W826		-