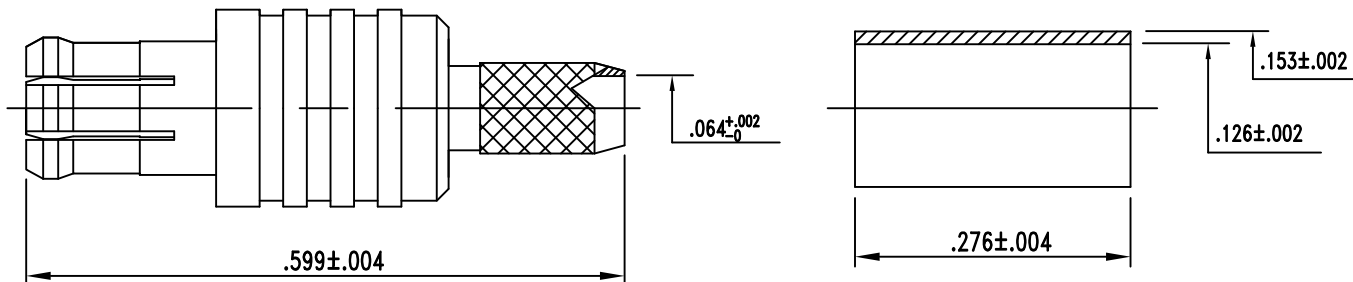


NOTES:
INTERFACE CONFORMS TO MCX CONNECTOR SERIES

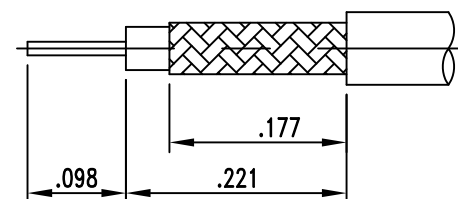
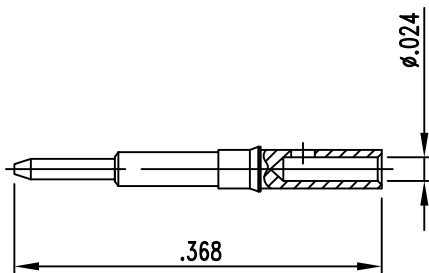
MATERIALS:
BODY, CONTACT BRASS PER ASTM-B-16
CONTACT OUTER BERYLLIUM COPPER PER ASTM-B-196
CRIMP FERRULE COPPER

INSULATORS TEFLON PER ASTM-D-1710

FINISHES:
BODY
CRIMP FERRULE
CONTACT GOLD PLATE PER MIL-G-45204



RoHS
COMPLIANT



RECOMMENDED
CABLE STRIPPING DIMS
CRIMP USING .128 HEX DIE

PROPRIETARY NOTICE
THIS DRAWING AND DESIGNS AND IDEAS EMBEDDED IN THE DEVICE TO WHICH IT RELATES AND THE METHOD OF PRODUCING THE DEVICE SHALL NOT BE EMPLOYED COPIED OR DISCLOSED TO ANYONE IN ANY MANNER WITHOUT THE WRITTEN CONSENT OF AN EZ FORM COMPANY OFFICIAL

REV.	DESCRIPTION	APPD	BY
		DATE	DATE

REVISIONS			

UNLESS OTHERWISE SPECIFIED:			
DIMENSIONS ARE IN INCHES:		SCALE	
TOLERANCES:			
DECIMALS:	FRACTIONS: ± 1/64		
2-PLACE ± .010	3-PLACE ± .005		
ANGLES: ± 3°			
MATERIAL:			
FINISH:			
DRAWN	DATE	CHECKED	DATE
P.J.P.	4-15-10	J.A.B.	4-15-10
APPROVED	DATE	SHEET 1 OF 1	
A.T.	4-15-10		

EZ FORM CABLE CORPORATION HAMDEN, CT 06517			
TITLE MCX STRAIGHT PLUG FOR RG-316-174 CABLE CRIMP TYPE			
A	CODE IDENT. 9W826	CD-701958-316	REV. -