

NOTES:

INTERFACE AND ENVIRONMENTAL REQUIREMENTS CONFORM TO CECC 22 220 & IEC 60169-36

ELECTRICAL SPECIFICATIONS:

FREQUENCY RANGE (GHz): DC TO 6 GHz
 RETURN LOSS (MAX.): > 21 dB
 INSERTION LOSS (dB MAX.): < 0.05 X vf(GHz) dB
 NOMINAL IMPEDANCE: 50 OHMS
 VOLTAGE RATING (MAX. VRMS): 335
 INSULATION RESISTANCE: > 1 GΩ
 CONTACT RESISTANCE, CENTER CONTACT (MAX. MILLIOHMS): 5.0
 CONTACT RESISTANCE, OUTER CONTACT (MAX. MILLIOHMS): 2.5

MECHANICAL & ENVIRONMENTAL SPECIFICATIONS:

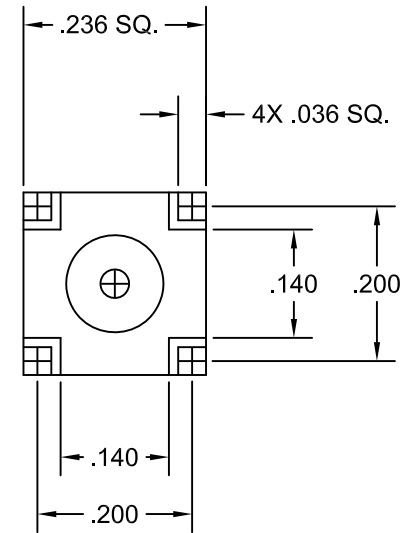
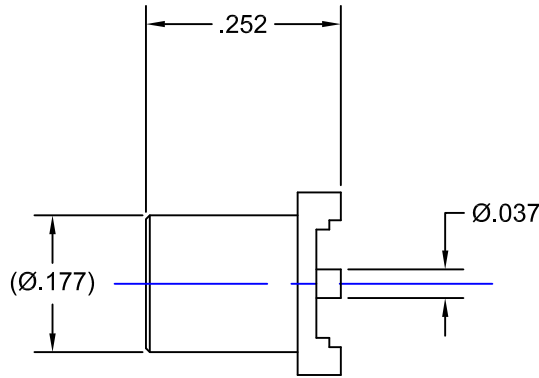
TEMPERATURE RATING (DEGREES CELCIUS): -55°C TO +155°C
 DURABILITY: 500 MATINGS
 ENGAGEMENT FORCE: ≤ 5.62 lb.
 DISENGAGEMENT FORCE: 1.8 MIN. TO 4.5 lbs. MAX.

MATERIALS:

BODY: BRASS PER ASTM-B-16
 INSULATOR: TEFLON PER ASTM-D-1710
 CONTACT: BERYLLIUM COPPER PER ASTM-B-196

FINISHES:

BODY: GOLD PLATE PER MIL-G-45204
 CONTACT: GOLD PLATE PER MIL-G-45204

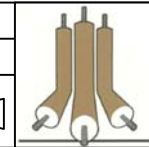


PROPRIETARY NOTICE
 THIS DRAWING AND DESIGNS AND IDEAS EMBEDDED IN THE DEVICE TO WHICH IT RELATES AND THE METHOD OF PRODUCING THE DEVICE SHALL NOT BE EMPLOYED COPIED OR DISCLOSED TO ANYONE IN ANY MANNER WITHOUT THE WRITTEN CONSENT OF AN EZ FORM COMPANY OFFICIAL

APPD.	EW	
DATE	5/15/13	
BY	EW	
DATE	5/15/13	
DESCRIPTION	INITIAL RELEASE	
REV.	-	

CABLE TERMINATION INFO/TOOLS
ASSEMBLY INSTRUCTION SHEET:
N/A
SOLDERING BASE:
N/A
SOLDERING MATE:
N/A
CONTACT SPACER:
N/A
CRIMP DIE SIZE:
N/A
OTHER:
N/A

UNLESS OTHERWISE SPECIFIED:			
DIMENSIONS ARE IN INCHES:		SCALE: NONE	
TOLERANCES:			
DECIMALS:	FRACTIONS: ± 1/64		
2-PLACE ± .030			
3-PLACE ± .015	ANGLES: ± 3°		
MATERIAL: SEE NOTES			
FINISH: SEE NOTES			
DRAWN	DATE	CHECKED	DATE
EW	5/15/13	AT	5/15/13
APPROVED	DATE	SHEET 1 OF 1	
JAB	5/15/13		



EZ Form Cable Corporation
 285 Welton Street
 Hamden, CT 06517

MCX JACK PC SURFACE MOUNT			
A	CODE IDENT.	701961-100MCX	REV.
	9W826		-