

RoHS
COMPLIANT

NOTES:

INTERFACE CONFORMS TO IEC 60169-36
AND CECC 22220 MCX SERIES

ELECTRICAL:

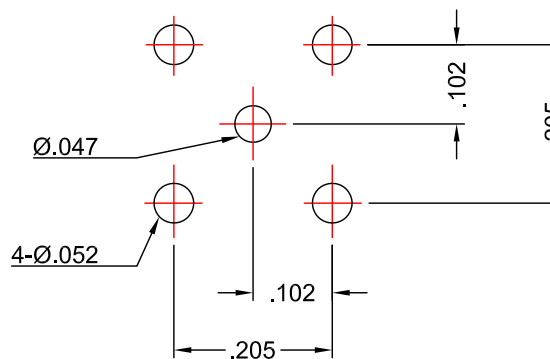
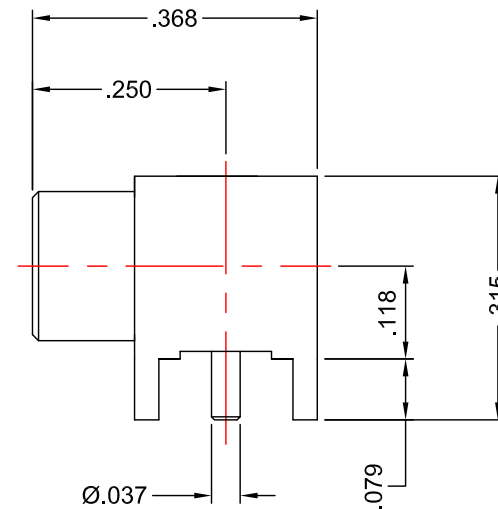
NOMINAL IMPEDANCE: 50Ω
FREQUENCY RANGE: DC TO 6 GHz

MATERIALS:

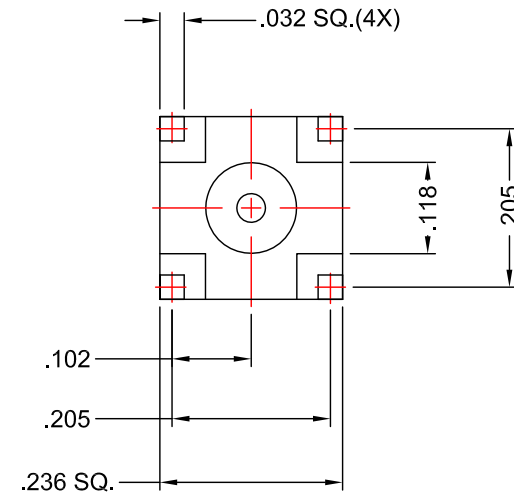
INSULATOR: TEFLON PER ASTM-D-1710
CONTACT: BERYLLIUM COPPER PER ASTM-B-196
BODY: 360 ALLOY BRASS 1/2 HARD PER ASTM-B-16

FINISHES:

CONTACT: GOLD PLATE PER MIL-DTL-45204
BODY: GOLD PLATE PER MIL-DTL-45204



RECOMMENDED PCB
HOLE LAYOUT



<div>PROPRIETARY NOTICE</div> <div>THIS DRAWING AND DESIGNS AND IDEAS EMBEDDED IN THE DEVICE TO WHICH IT RELATES AND THE METHOD OF PRODUCING THE DEVICE SHALL NOT BE EMPLOYED COPIED OR DISCLOSED TO ANYONE IN ANY MANNER WITHOUT THE WRITTEN CONSENT OF AN EZ FORM COMPANY OFFICIAL</div>	APPD.	T.D.						
	DATE	03/17/17						
	BY	J.N.						
	DATE	03/17/17						
	DESCRIPTION	INITIAL RELEASE						
	REV.	—						
	<div>UNLESS OTHERWISE SPECIFIED:</div> <div>DIMENSIONS ARE IN INCHES: TOLERANCES: NONE</div>			<div>SCALE 4:1</div> <div></div>	<div></div> <div>EZ Form Cable Corporation 285 Welton Street Hamden, CT 06517 WWW.ezform.com</div>			
	MATERIAL: SEE NOTES			TITLE MCX RIGHT ANGLE JACK PCB MOUNT	A	CODE IDENT. 9W826	701963-101CX	REV. -
FINISH: SEE NOTES								
DRAWN J.N.	DATE 03/17/17	CHECKED T.D.	DATE 03/17/17					
APPROVED A.T.	DATE 03/17/17	SHEET 1	OF 1					