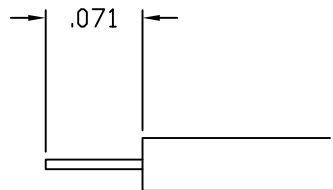
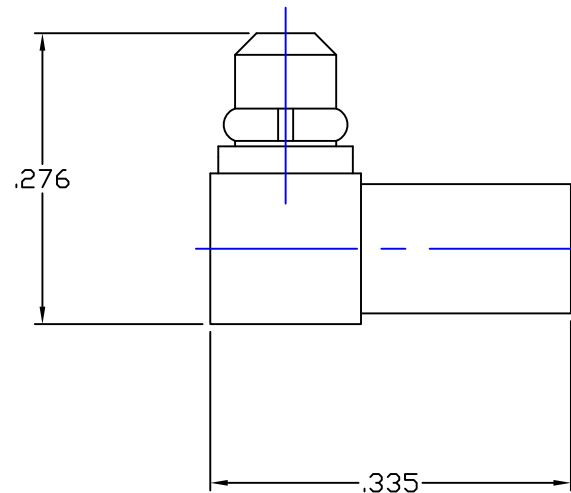


NOTES:
INTERFACE CONFORMS TO MMCX CONNECTOR SERIES

MATERIALS:
BODY,CAP & CONTACT BRASS PER ASTM-B-16
CONTACT OUTER BERYLLIUM COPPER PER ASTM-B-196
INSULATORS TEFLON PER ASTM-D-1710

FINISHES:
ALL METAL PARTS GOLD PLATE PER MIL-G-45204



RECOMMENDED CABLE STRIPPING
DIMENSIONS

ORDER AS 704004-086MMCX

THIS DRAWING THE DESIGNS AND IDEAS EMBODIED IN THE DEVICE TO WHICH IT RELATES AND THE METHOD OF PRODUCING THE DEVICE SHALL NOT BE EMPLOYED COPIED OR DISCLOSED TO ANYONE IN ANY MANNER WITHOUT THE CONSENT OF ANEZ FORM COMPANY OFFICIAL	APPD			UNLESS OTHERWISE SPECIFIED: DIMENSIONS ARE IN INCHES: TOLERANCES: DECIMALS: FRACTIONS: $\pm 1/64$ 2-PLACE $\pm .020$ 3-PLACE $\pm .015$ ANGLES: $\pm 3^\circ$ MATERIAL: _____ FINISH: _____ DRAWN DATE CHECKED DATE P.J.P. 4-22-03 J.A.B. 4-22-03 APPROVED DATE SHEET OF T.R. 4-22-03	EZ FORM CABLE CORPORATION HAMDEN, CT 06517			
	BY				TITLE MMCX RIGHT ANGLE PLUG DIRECT SOLDER FOR .086 SEMI RIGID CABLE			
	DATE							
	DESCRIPTION					A 9W826 CD-704004-086		
REV.				CODE IDENT. REV. —				