

RoHS
COMPLIANT

NOTES:

INTERFACE AND ENVIRONMENTAL REQUIREMENTS CONFORM TO
CECC 22 220 & IEC 60169, MMCX SERIES

ELECTRICAL SPECIFICATIONS:

FREQUENCY RANGE (GHz): DC TO 6 GHz
VSWR (MAX.): 1.25:1
INSERTION LOSS: 0.2 dB MAX @ 1 GHz
NOMINAL IMPEDANCE: 50 OHMS
VOLTAGE RATING (MAX. VRMS): 170
DIELECTRIC WITHSTANDING VOLTAGE: 500 VRMS MIN.
INSULATION RESISTANCE: 1000 MEGOHMS MIN.
HI POT WITHSTANDING VOLTAGE: 500 VRMS
CONTACT RESISTANCE, CENTER CONTACT (MAX. MILLIOHMS): 5.0
CONTACT RESISTANCE, OUTER CONTACT (MAX. MILLIOHMS): 2.5
RF LEAKAGE: -60 dB MIN.

MECHANICAL & ENVIRONMENTAL SPECIFICATIONS:

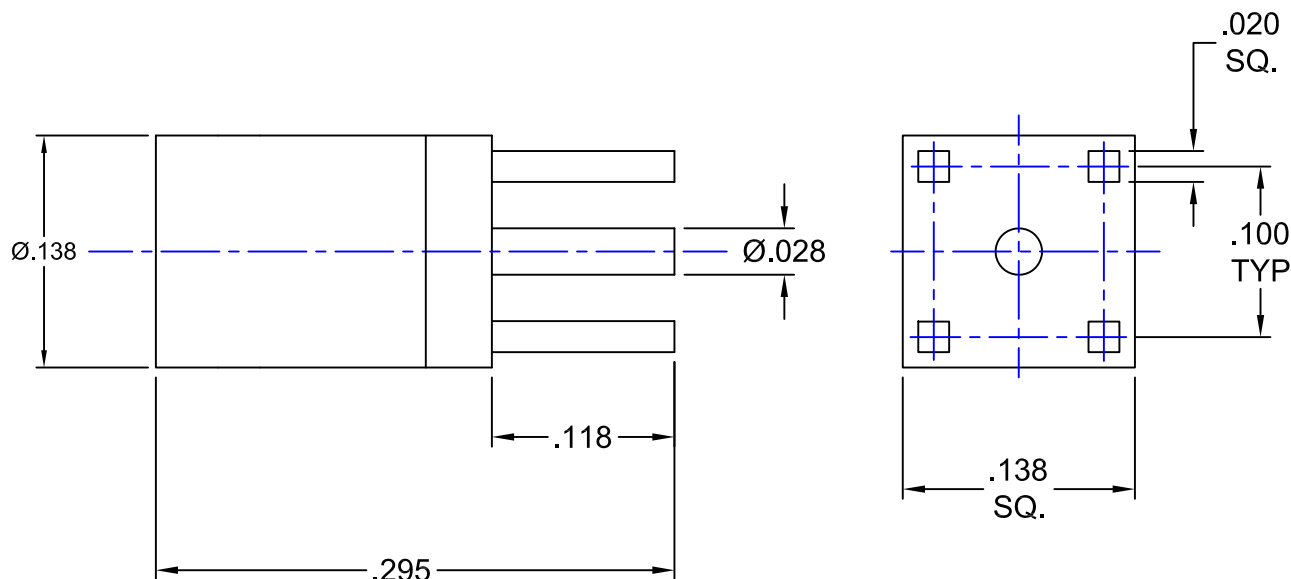
TEMPERATURE RATING (DEGREES CELCIUS): -55°C TO +155°C
DURABILITY: 500 MATINGS
CONTACT RETENTION: 2.3 LBS. MIN.
ENGAGEMENT FORCE: 3.4 lb. MAX.
DISENGAGEMENT FORCE: 1.4 - 3.4 lb.

MATERIALS:

BODY: BRASS PER ASTM-B-16
INSULATOR: TEFLON PER ASTM-D-1710
CONTACT: BERYLLIUM COPPER PER ASTM-B-196

FINISHES:

BODY: GOLD PLATE PER MIL-G-45204
CONTACT: GOLD PLATE PER MIL-G-45204



PROPRIETARY NOTICE

THIS DRAWING AND DESIGNS AND IDEAS EMBEDDED
IN THE DEVICE TO WHICH IT RELATES AND THE
METHOD OF PRODUCING THE DEVICE SHALL NOT BE
EMPLOYED COPIED OR DISCLOSED TO ANYONE IN ANY
MANNER WITHOUT THE WRITTEN CONSENT OF AN
EZ FORM COMPANY OFFICIAL

APPD.	EW	
DATE	9/27/13	
BY	EW	
DATE	9/27/13	
DESCRIPTION	ECN#9909, UPDATED DRAWING & FORMAT	
REV.	A	

UNLESS OTHERWISE SPECIFIED:

DIMENSIONS ARE IN INCHES:
TOLERANCES:

SCALE
8:1

DECIMALS: FRACTIONS: $\pm 1/64$
2-PLACE $\pm .03$
3-PLACE $\pm .01$ ANGLES: $\pm 3^\circ$



MATERIAL:

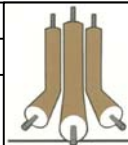
SEE NOTES

FINISH:

SEE NOTES

DRAWN	DATE	CHECKED	DATE
EW	9/27/13	AT	9/27/13

APPROVED	DATE	SHEET	1	OF	1
JAB	9/27/13				



**EZ Form Cable
Corporation**

285 Welton Street
Hamden, CT 06517

MMCX STRAIGHT
PCB MOUNT JACK

A

CODE IDENT.
9W826

704009-100

REV.
A