

**RoHS  
COMPLIANT**

**NOTES:**

INTERFACE AND ENVIRONMENTAL REQUIREMENTS CONFORM TO CECC 22 220 & IEC 60169, MMCX SERIES

**ELECTRICAL SPECIFICATIONS:**

FREQUENCY RANGE (GHz): DC TO 6 GHz  
 VSWR (MAX.): 1.25:1  
 INSERTION LOSS: 0.2 dB MAX @ 1 GHz  
 NOMINAL IMPEDANCE: 50 OHMS  
 VOLTAGE RATING (MAX. VRMS): 170  
 DIELECTRIC WITHSTANDING VOLTAGE: 500 VRMS MIN.  
 INSULATION RESISTANCE: 1000 MEGOHMS MIN.  
 HI POT WITHSTANDING VOLTAGE: 500 VRMS  
 CONTACT RESISTANCE, CENTER CONTACT (MAX. MILLIOHMS): 5.0  
 CONTACT RESISTANCE, OUTER CONTACT (MAX. MILLIOHMS): 2.5  
 RF LEAKAGE: -60 dB MIN.

**MECHANICAL & ENVIRONMENTAL SPECIFICATIONS:**

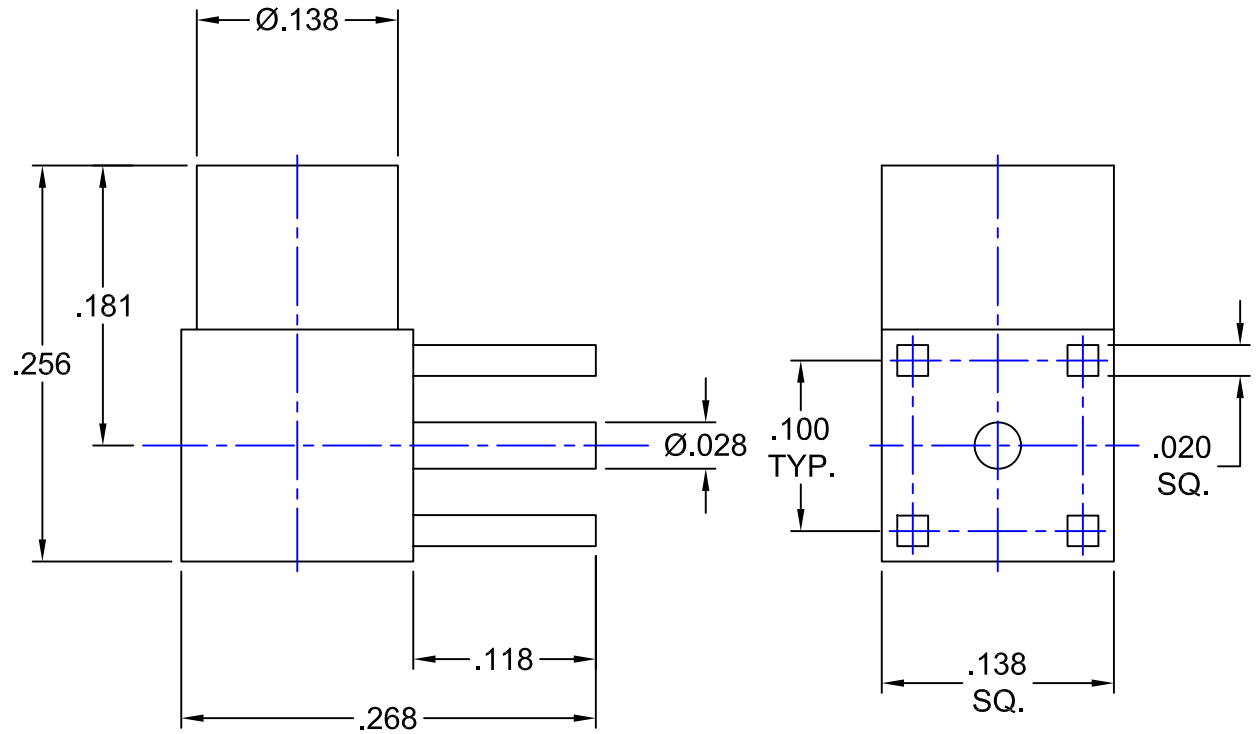
TEMPERATURE RATING (DEGREES CELCIUS): -55°C TO +155°C  
 DURABILITY: 500 MATINGS  
 CONTACT RETENTION: 2.3 LBS. MIN.  
 ENGAGEMENT FORCE: 3.4 lb. MAX.  
 DISENGAGEMENT FORCE: 1.4 - 3.4 lb.

**MATERIALS:**

BODY: BRASS PER ASTM-B-16  
 INSULATOR: TEFLON PER ASTM-D-1710  
 CONTACT: BERYLLIUM COPPER PER ASTM-B-196

**FINISHES:**

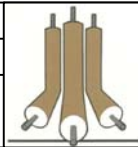
BODY: GOLD PLATE PER MIL-G-45204  
 CONTACT: GOLD PLATE PER MIL-G-45204



**PROPRIETARY NOTICE**  
 THIS DRAWING AND DESIGNS AND IDEAS EMBEDDED IN THE DEVICE TO WHICH IT RELATES AND THE METHOD OF PRODUCING THE DEVICE SHALL NOT BE EMPLOYED COPIED OR DISCLOSED TO ANYONE IN ANY MANNER WITHOUT THE WRITTEN CONSENT OF AN EZ FORM COMPANY OFFICIAL

APPD.	EW
DATE	9/27/13
BY	EW
DATE	9/27/13
DESCRIPTION	ECN#9898_UPDATED DRAWING & FORMAT
REV.	A

<b>UNLESS OTHERWISE SPECIFIED:</b>			
DIMENSIONS ARE IN INCHES:		SCALE	
TOLERANCES:		8:1	
DECIMALS:	FRACTIONS:	⊙ □	
2-PLACE ±.03	± 1/64		
3-PLACE ±.01	ANGLES: ± 3°		
MATERIAL:	SEE NOTES		
FINISH:	SEE NOTES		
DRAWN	DATE	CHECKED	DATE
EW	9/27/13	AT	9/27/13
APPROVED	DATE	SHEET 1 OF 1	
JAB	9/27/13		



<b>EZ Form Cable Corporation</b>			
285 Welton Street Hamden, CT 06517			
TITLE MMCX RIGHT ANGLE PCB MOUNT JACK			
CODE IDENT.	704010-100	REV.	A
<b>A</b>	9W826		