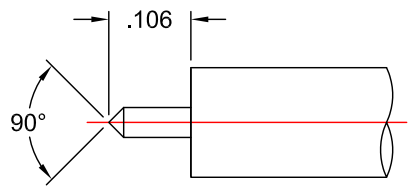


RoHS
COMPLIANT

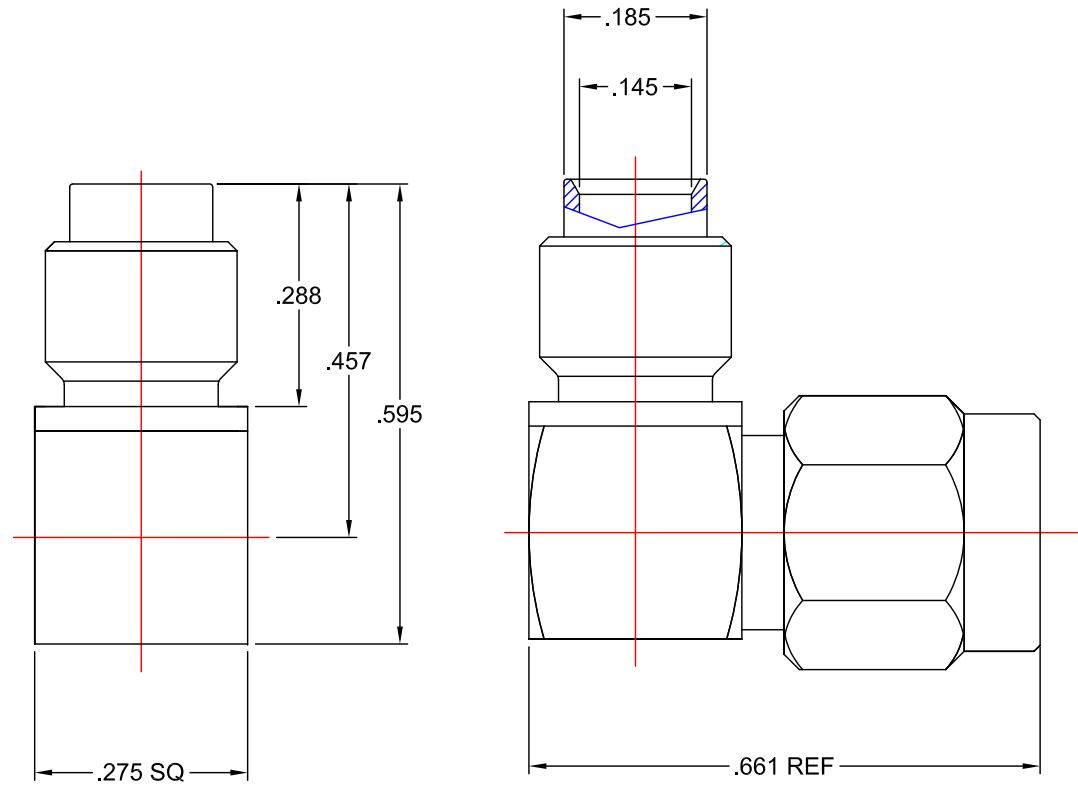
NOTES:
INTERFACE REQUIREMENTS CONFORM TO MIL-PRF-39012
AND MIL-STD-348, SMA SERIES

MATERIALS:
BODY : BRASS, ALLOY 360 PER ASTM-B-16
COUPLING NUT: STAINLESS STEEL PER ASTM-A-582
INSULATOR: TEFLON PER ASTM-D-1710
CONTACT: BERYLLIUM COPPER PER ASTM-B-196
O-RING: SILICONE RUBBER PER ZZ-R-765

FINISHES:
BODY : GOLD PLATE PER MIL-G-45204
CONTACT : GOLD PLATE PER MIL-G-45204
COUPLING NUT: PASSIVATE PER QQ-P-35



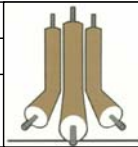
RECOMMENDED CABLE
TRIM DIMENSIONS



PROPRIETARY NOTICE
THIS DRAWING AND DESIGNS AND IDEAS EMBEDDED
IN THE DEVICE TO WHICH IT RELATES AND THE
METHOD OF PRODUCING THE DEVICE SHALL NOT BE
EMPLOYED COPIED OR DISCLOSED TO ANYONE IN ANY
MANNER WITHOUT THE WRITTEN CONSENT OF AN
EZ FORM COMPANY OFFICIAL

APPD.	AT	
DATE	3/2/16	
BY	TD	
DATE	3/2/16	
DESCRIPTION	INITIAL RELEASE	
REV.	-	

UNLESS OTHERWISE SPECIFIED:			
DIMENSIONS ARE IN INCHES:		SCALE	
TOLERANCES:		4:1	
DECIMALS:	FRACTIONS: ± 1/64		
2-PLACE ± .010			
3-PLACE ± .005	ANGLES: ± 3°		
MATERIAL:	SEE NOTES		
FINISH:	SEE NOTES		
DRAWN	DATE	CHECKED	DATE
TD	3/2/16	AT	3/2/16
APPROVED	DATE	SHEET 1 OF 1	
FV	3/2/16		



EZ Form Cable Corporation
285 Welton Street
Hamden, CT 06517

TITLE			
SMA SWEEP RIGHT ANGLE FOR Ø.141 SEMI-RIGID CABLE DIRECT SOLDER,			
A	CODE IDENT.	705516-903	REV.
	9W826		-