

RoHS
COMPLIANT

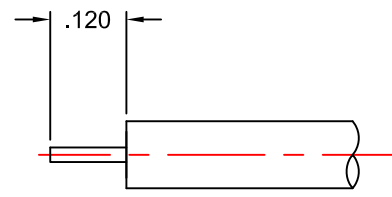
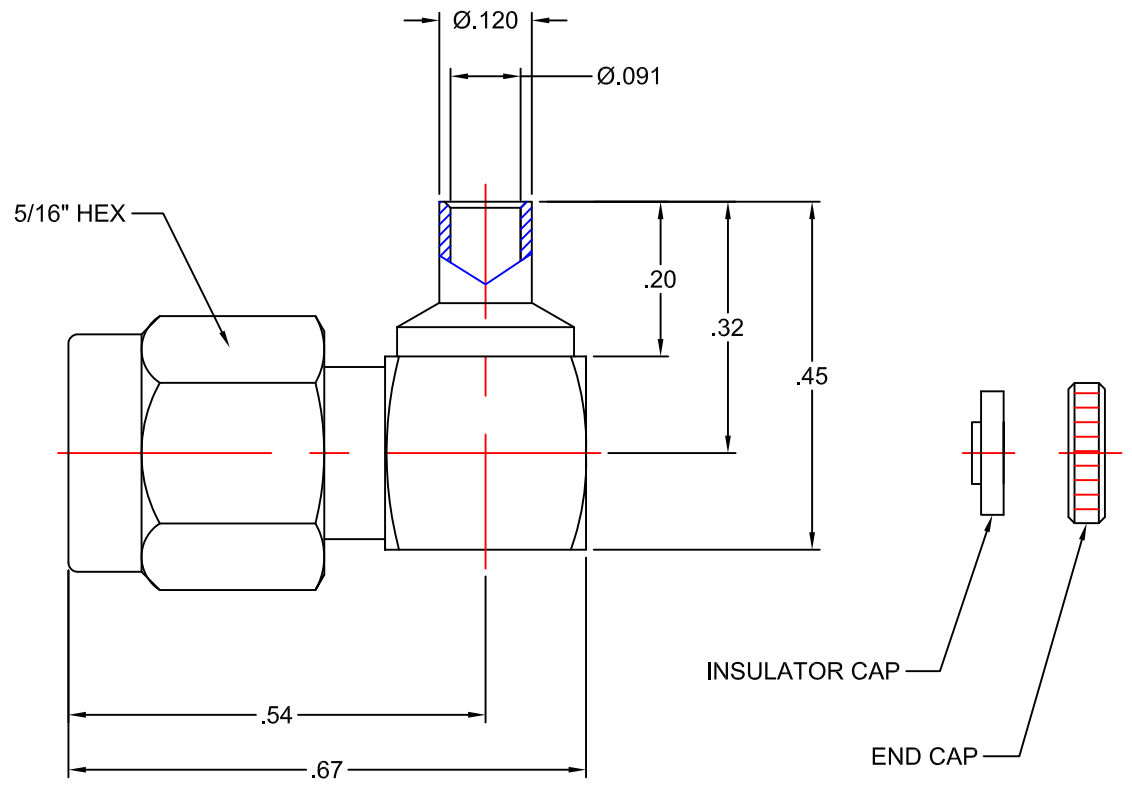
NOTES:
INTERFACE REQUIREMENTS CONFORM TO MIL-PRF-39012
AND MIL-STD-348, SMA SERIES

ELECTRICAL SPECIFICATIONS:
FREQUENCY RANGE: DC TO 12.4 GHz
VSWR MAX.: 1.30:1
NOMINAL IMPEDANCE: 50 Ω
VOLTAGE RATING (MAX. VRMS): 500

MECHANICAL & ENVIRONMENTAL SPECIFICATIONS:
MATING CYCLES: ≥250
TEMPERATURE RANGE: -65°C TO +165°C

MATERIALS:
BODY & NUT: BRASS, ALLOY 360 PER ASTM-B-16
INSULATOR: TEFLON PER ASTM-D-1710
CONTACT: BRASS, ALLOY 360 PER ASTM-B-16
RETAINING RING: BERYLLIUM COPPER PER ASTM-B-196
GASKET: SILICONE RUBBER PER ZZ-R-765

FINISHES:
BODY: GOLD PLATE PER MIL-G-45204
CONTACT : GOLD PLATE PER MIL-G-45204

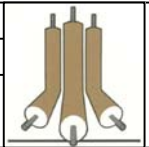


RECOMMENDED CABLE TRIM DIMENSIONS

PROPRIETARY NOTICE
THIS DRAWING AND DESIGNS AND IDEAS EMBEDDED IN THE DEVICE TO WHICH IT RELATES AND THE METHOD OF PRODUCING THE DEVICE SHALL NOT BE EMPLOYED COPIED OR DISCLOSED TO ANYONE IN ANY MANNER WITHOUT THE WRITTEN CONSENT OF AN EZ FORM COMPANY OFFICIAL

APPD.	EW	
DATE	9/4/13	
BY	EW	
DATE	9/4/13	
DESCRIPTION	ECN#9999, UPDATED	
REV.	-	

UNLESS OTHERWISE SPECIFIED:			
DIMENSIONS ARE IN INCHES:		SCALE	
TOLERANCES:		4:1	
DECIMALS:	FRACTIONS: ± 1/64		
2-PLACE ± .010			
3-PLACE ± .005	ANGLES: ± 3°		
MATERIAL:	SEE NOTES		
FINISH:	SEE NOTES		
DRAWN	DATE	CHECKED	DATE
EW	9/4/13	AT	9/4/13
APPROVED	DATE	SHEET 1 OF 1	
JAB	9/4/13		



EZ Form Cable Corporation
285 Welton Street
Hamden, CT 06517

TITLE
SMA RIGHT ANGLE PLUG
FOR Ø.086 SEMI-RIGID CABLE
DIRECT SOLDER

A	CODE IDENT.	705523-001SMA	REV.	A
	9W826			