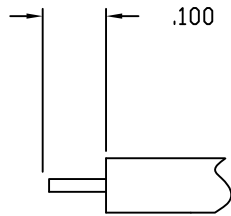


NOTES:  
INTERFACE CONFORMS TO MIL-PRF-39012 SMA SERIES

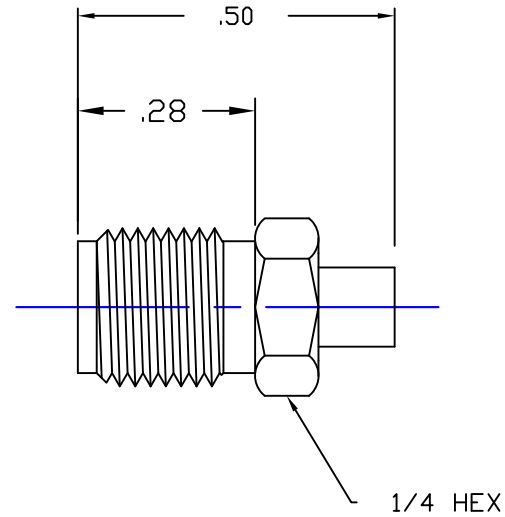
MATERIALS:

BODY- STNLS. STEEL PER ASTM-B-582 TYPE 303  
CONTACT- BERYLLIUM COPPER PER ASTM-B-196  
INSULATOR- TEFLON PER ASTM-D-1710

FINISHES:  
CONTACT & BODY-GOLD PLATE PER MIL-G-45204



CABLE STRIPPING  
DIMENSIONS



THIS DRAWING THE DESIGNS AND IDEAS EMBEDDED IN THE DEVICE TO WHICH IT RELATES AND THE METHOD OF PRODUCING THE DEVICE SHALL NOT BE EMPLOYED COPIED OR DISCLOSED TO ANYONE IN ANY MANNER WITHOUT THE CONSENT OF AN EZ FORM COMPANY OFFICIAL

APPD		
BY		
DATE		
DESCRIPTION		
REV.		

<b>UNLESS OTHERWISE SPECIFIED:</b>			
DIMENSIONS ARE IN INCHES:		SCALE	
TOLERANCES:		_____	
DECIMALS:	FRACTIONS	± 1/64	
2-PLACE ± .01	ANGLES	± 3	
3-PLACE + .005			
MATERIAL: _____			
FINISH: _____			
DRAWN	DATE	CHECKED	DATE
P.J.P.	3-18-03		
APPROVED	DATE	SHEET	OF
A.T.	3-18-03		

<b>EZ FORM CABLE CORPORATION HAMDEN, CT 06517</b>			
TITLE SMA FEMALE JACK FOR .086 SEMI RIGID CABLE			
<b>A</b>	CODE IDENT. <b>9W826</b>	CD 705524-101	REV. -