

INTERFACE CONFORMS TO MIL-PRF-39012 SMA SERIES

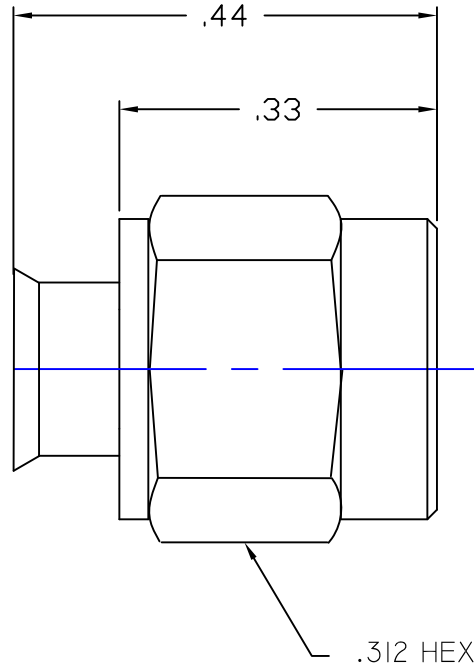
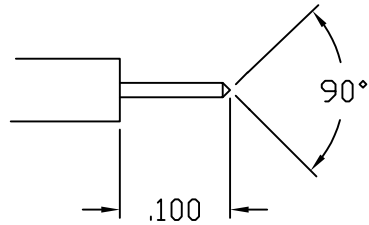
NOTES:

MATERIALS:

- BODY _____ 304 STAINLESS STL PER ASTM-A- 582
- COUPLING NUT _____ 303 STAINLESS STL PER ASTM-A 582
- CONTACT & SNAP RING _____ BERYLLIUM COPPER PER ASTM-B-196
- GASKET _____ SILICONE PER ZZ-R-765
- INSULATOR _____ TEFLON VIRGIN WHITE PER ASTM-D-1710

FINISHES:

- CONTACT _____ GOLD PLATE PER MIL-G-45204
- COUPLING NUT, BODY _____ PASSIVATE PER QQ-P-35



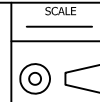
THIS DRAWING THE DESIGNS AND IDEAS EMBEDDED IN THE DEVICE TO WHICH IT RELATES AND THE METHOD OF PRODUCING THE DEVICE SHALL NOT BE EMPLOYED COPIED OR DISCLOSED TO ANYONE IN ANY MANNER WITHOUT THE CONSENT OF AN EZ FORM COMPANY OFFICIAL

APPD		
BY		
DATE		
DESCRIPTION		
REV.		

UNLESS OTHERWISE SPECIFIED:

DIMENSIONS ARE IN INCHES:
TOLERANCES:

DECIMALS: FRACTIONS ± 1/64
2-PLACE ± .015 ANGLES ± 3
3-PLACE ± .005



MATERIAL: SEE NOTES

FINISH: SEE NOTES

DRAWN	DATE	CHECKED	DATE
P.J.P.	12-10-04	A.T.	12-10-04

APPROVED	DATE	SHEET	OF
J.A.B.	12-10-04		

EZ FORM
CABLE CORPORATION
HAMDEN, CT 06517

TITLE
SMA MALE PLUG, CAPTIVE CONTACT
FOR USE WITH .141 LA SEMI RIGID CABLE

A	CODE IDENT.		REV.
	9W826	705533-102	