

**NOTES:**

INTERFACE CONFORMS TO MIL-PRF-39012 SMA SERIES & MIL-STD-348

**MATERIALS:**

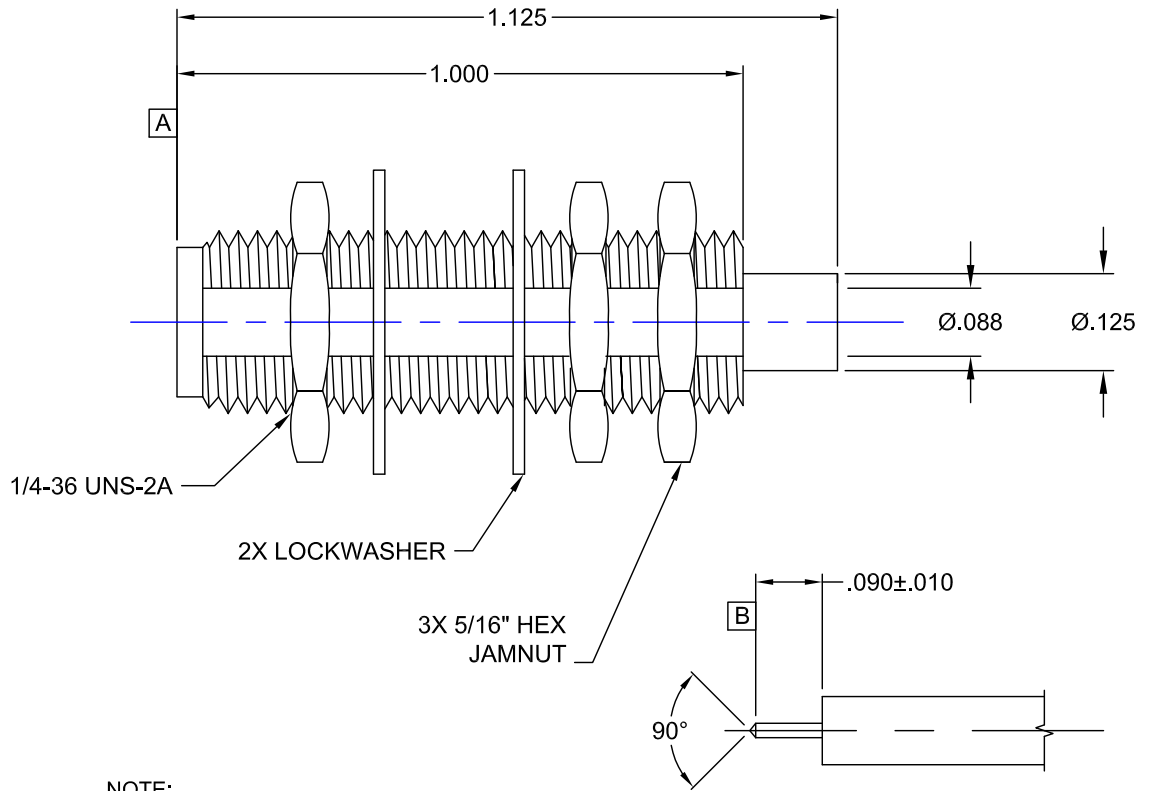
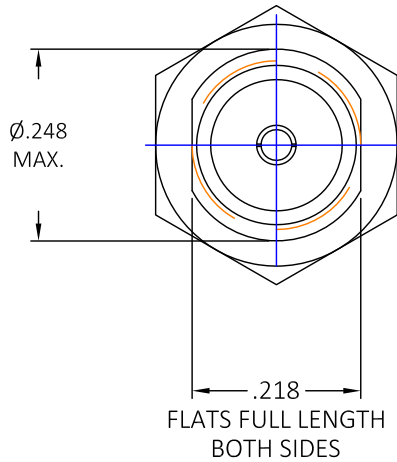
BODY & JAM NUT: STAINLESS STL PER ASTM-A-582  
 CONTACT: BERYLLIUM COPPER PER ASTM-B-196  
 LOCKWASHER: PHOSPHOR BRONZE  
 INSULATOR: TEFLON PLATE PER ASTM-D-1710

**FINISHES:**

JAM NUT: PASSIVATE PER ASTM-A-380  
 LOCKWASHER: NICKEL PLATE PER QQ-N-290  
 CONTACT,BODY: GOLD PLATE PER MIL-G-45204

**ELECTRICALS:**

NOMINAL IMPEDANCE: 50 OHMS  
 FREQUENCY RANGE: DC TO 18 GHz



NOTE:  
 WHEN THE CABLE IS ASSEMBLED TO THE CONNECTOR, THE DISTANCE BETWEEN PLANE "A" & "B" IS .875"

RECOMMENDED STRIPPING DIMENSIONS



<b>PROPRIETARY NOTICE</b> THIS DRAWING AND DESIGNS AND IDEAS EMBEDDED IN THE DEVICE TO WHICH IT RELATES AND THE METHOD OF PRODUCING THE DEVICE SHALL NOT BE EMPLOYED COPIED OR DISCLOSED TO ANYONE IN ANY MANNER WITHOUT THE WRITTEN CONSENT OF AN EZ FORM COMPANY OFFICIAL	APPD.	EW	EW
	DATE	9-26-12	11-19-12
	BY	EW	EW
	DATE	9-26-12	11-19-12
DESCRIPTION	INITIAL RELEASE		
REV.	-	A	ECN#9999

<b>UNLESS OTHERWISE SPECIFIED:</b>			
DIMENSIONS ARE IN INCHES:		SCALE	
TOLERANCES:		4:1	
DECIMALS:	FRACTIONS:		
2-PLACE ±.010	± 1/64		
3-PLACE ±.005	ANGLES: ± 3°		
MATERIAL: SEE NOTES			
FINISH: SEE NOTES			
DRAWN	DATE	CHECKED	DATE
E.W.	9-26-12	A.T.	9-26-12
APPROVED	DATE	SHEET 1 OF 1	
J.A.B	9-26-12		

 <b>EZ Form Cable Corporation</b> 285 Welton Street Hamden, CT 06517	
TITLE <b>SMA JACK                  EXTENDED BODY                  FOR .086 SEMI-RIGID</b>	
CODE IDENT. <b>A 9W826</b>	<b>705657-703</b>
REV. <b>A</b>	