

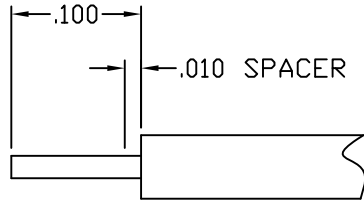
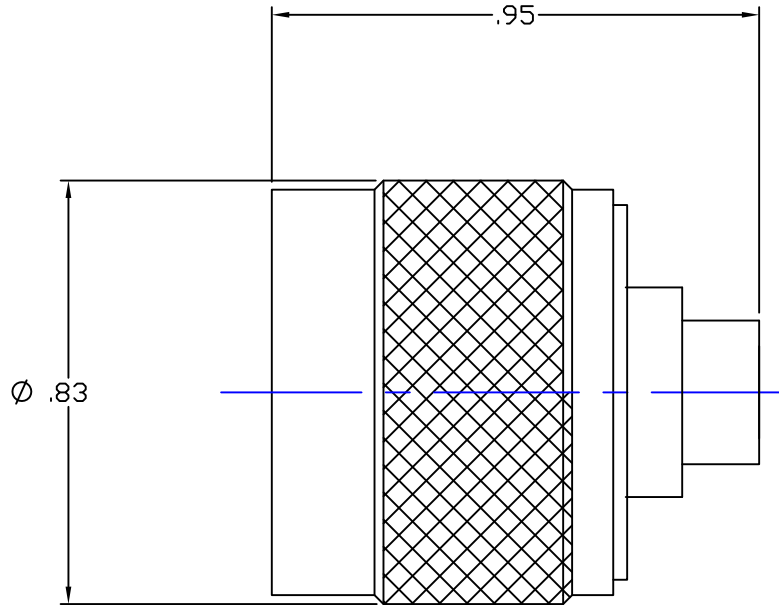
INTEFFACE CONFORMS TO MIL-PRF-39012 TYPE NM
FOR USE WITH RG-402 .141 DIA. SEMI RIGID CABLE

MATERIALS:

BODY COUPLING NUT, CONTACT— BRASS 1/2 HD PER ASTN-B-16
INSULATOR _____ TEFLON PER ASTM-D-1710
GASKET _____ SILICONE PER ZZ-R-765
SNAP RING _____ BERYLLIUM COPPER PER ASTM-B-196

FINISHES:

BODY & CONTACT — GOLD PLATED PER MIL-G-45204
COUPLING NUT — NICKEL PLATED PER QQ-N-290



RECOMMENDED CABLE
STRIPING DIM.

THIS DRAWING THE DESIGNS AND IDEAS EMBODIED IN THE DEVICE TO WHICH IT RELATES AND THE METHOD OF PRODUCING THE DEVICE SHALL NOT BE EMPLOYED COPIED OR DISCLOSED TO ANYONE IN ANY MANNER WITHOUT THE CONSENT OF ANEZ FORM COMPANY OFFICIAL

APPD		
BY		
DATE		
DESCRIPTION		
REV.		

UNLESS OTHERWISE SPECIFIED:

DIMENSIONS ARE IN INCHES:
TOLERANCES:

DECIMALS: 2-PLACE ± .010 FRACTIONS: ± 1/64
3-PLACE ± .005 ANGLES: ± 3°

SCALE _____

MATERIAL: _____

FINISH: _____

DRAWN	DATE	CHECKED	DATE
P.J.P.	9-13-01	T.A.R.	9-13-01

APPROVED	DATE	SHEET	OF
J.A.B.	9-13-01		

EZ FORM
CABLE CORPORATION
HAMDEN, CT. 06517

TITLE
TYPE "N" MALE PLUG
FOR .141 DIA SEMI RIGID CABLE
DIRECT SOLDER

A	CODE IDENT.	REV.
	9W826 CD-705930-102	-